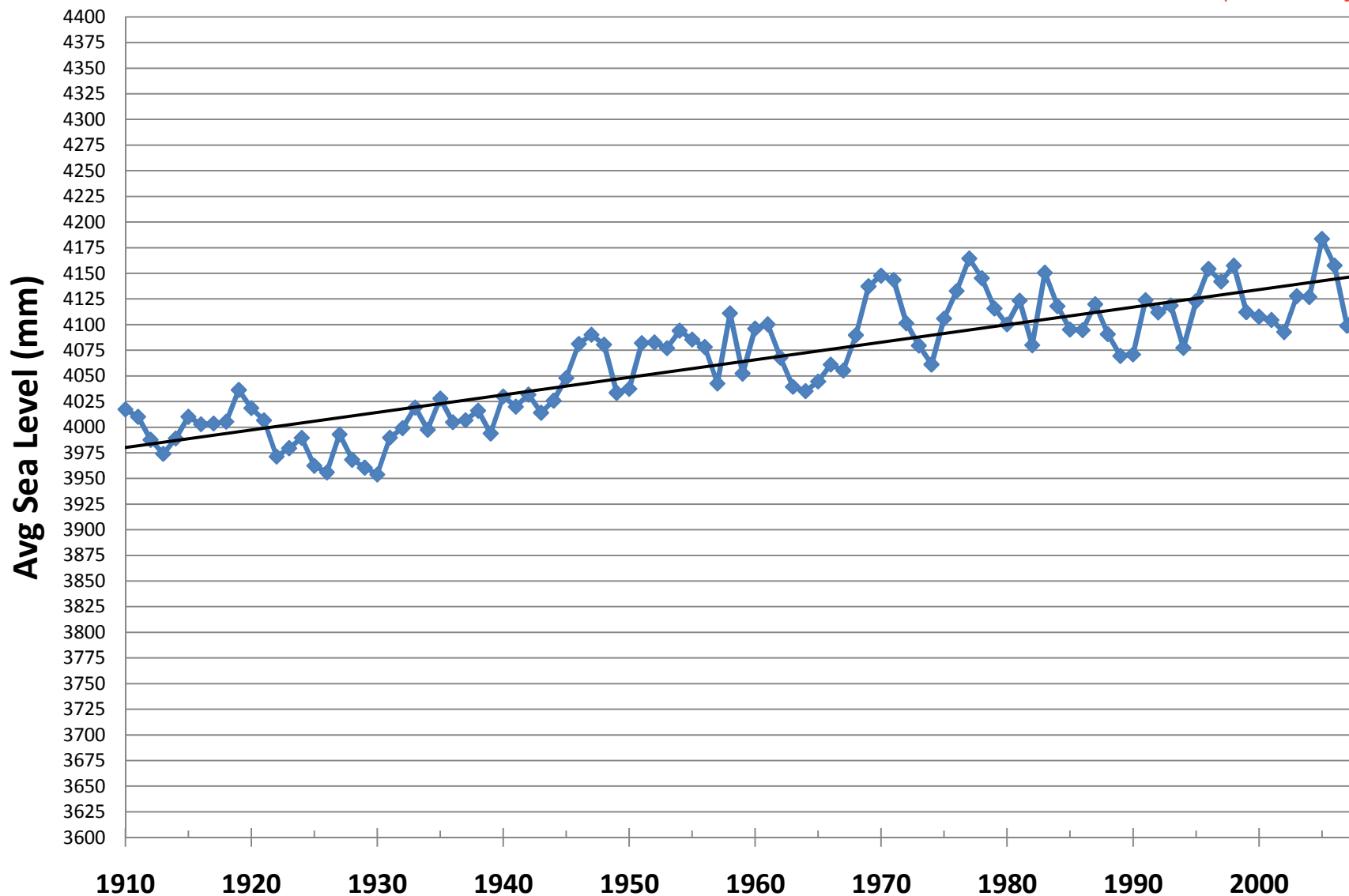


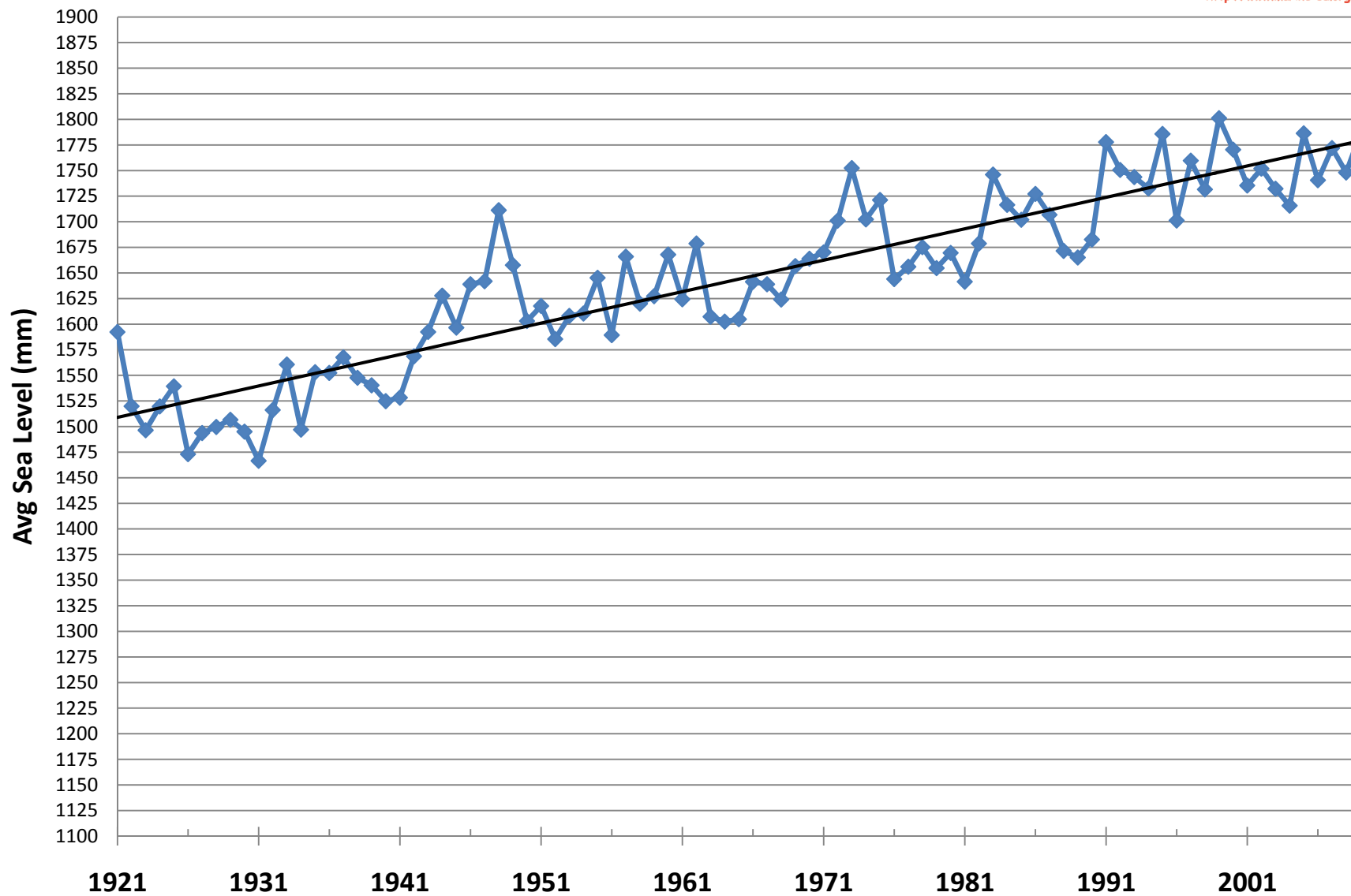
Average Annual Sea Level for Portland, ME 1910 - 2008



Bridge Sea Level DATA (http://www2.vims.edu/bridge/DATA.cfm?Bridge_Location=archive0910.html)
Data from the Univ. of Hawaii Sea Level Center



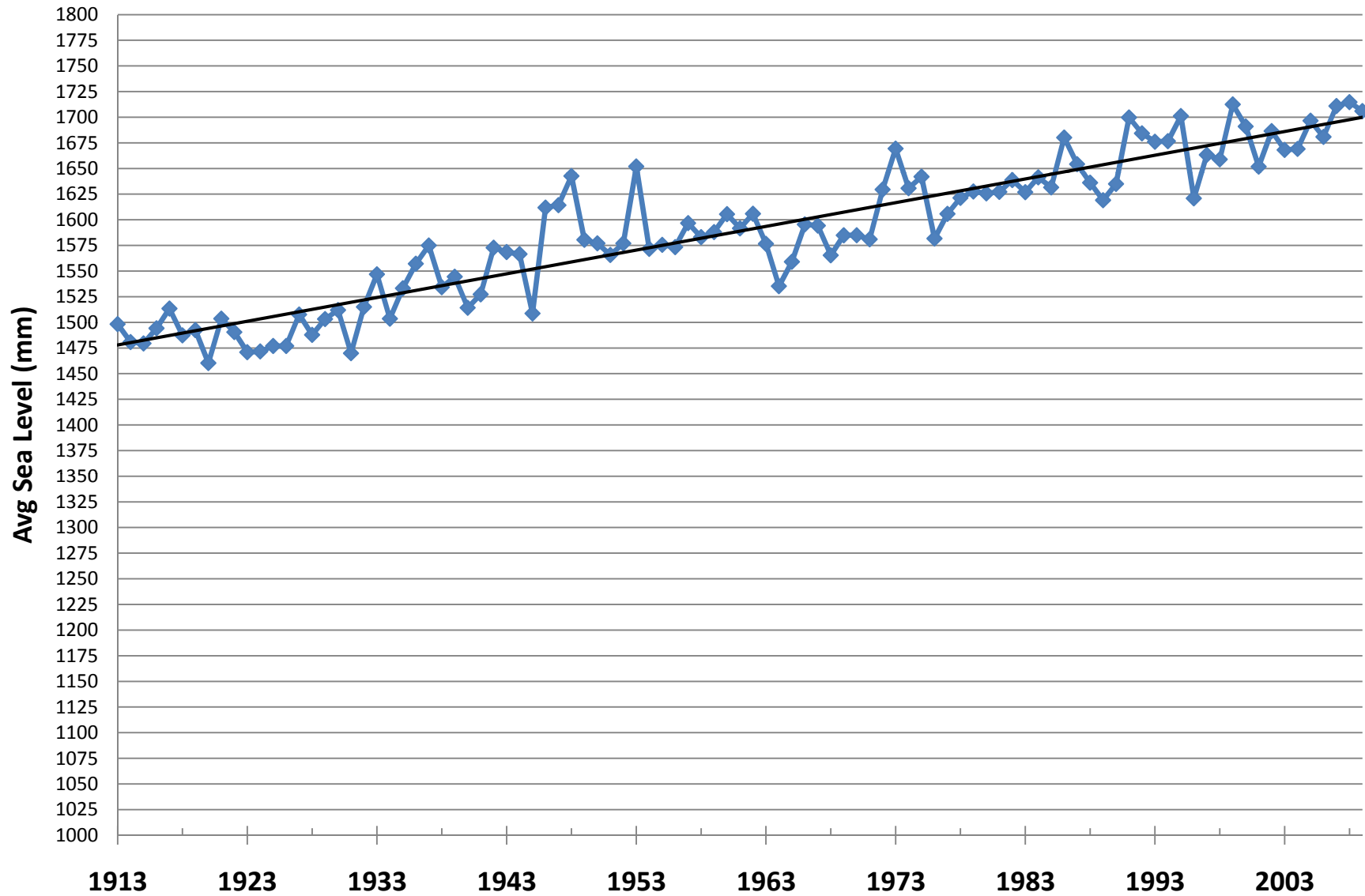
Average Annual Sea Level for Charleston, SC 1921 - 2009



Bridge Sea Level DATA (http://www2.vims.edu/bridge/DATA.cfm?Bridge_Location=archive0910.html)
Data from the Univ. of Hawaii Sea Level Center



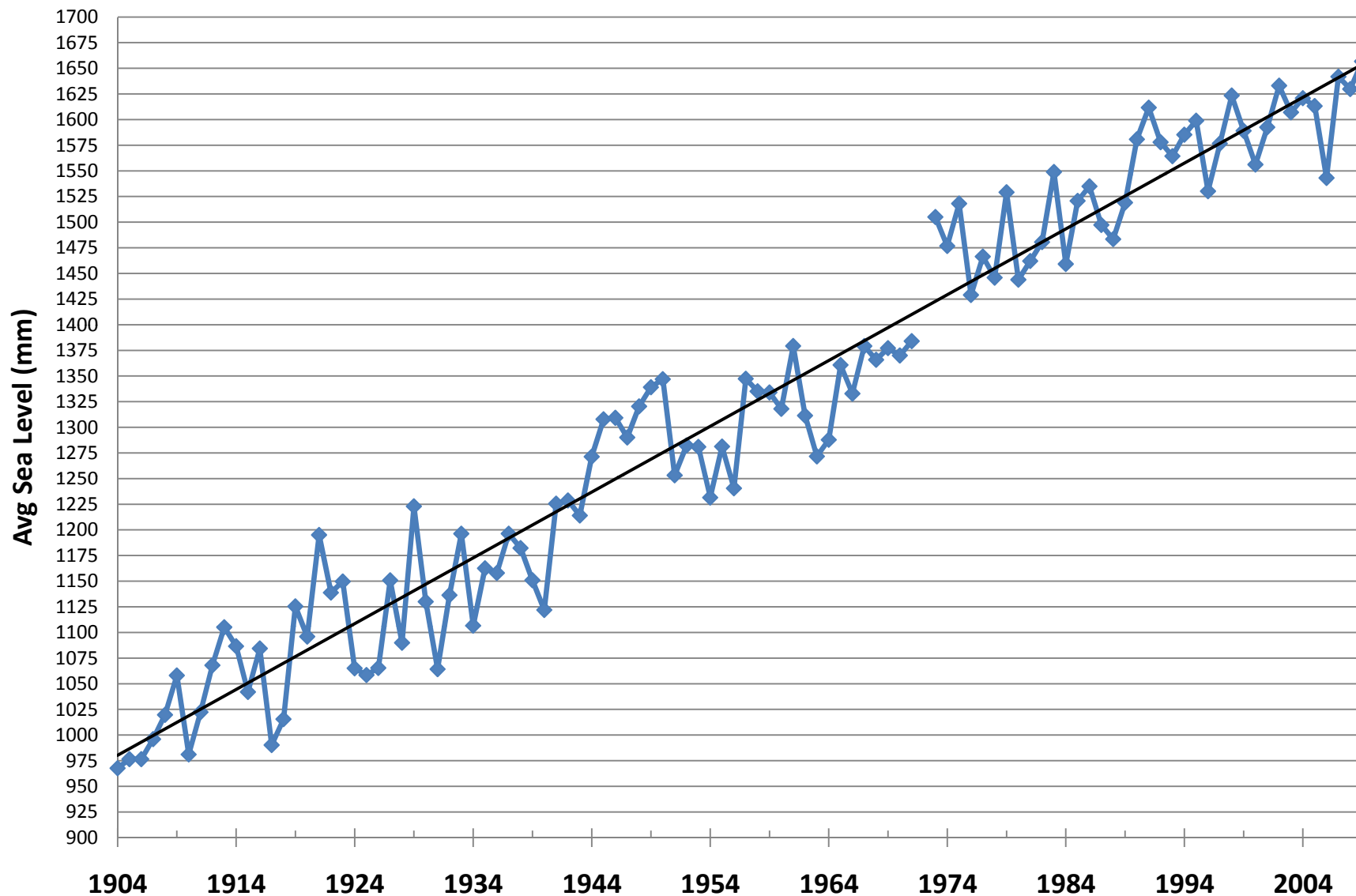
Average Annual Sea Level for Key West, FL 1913 - 2009



Bridge Sea Level DATA (http://www2.vims.edu/bridge/DATA.cfm?Bridge_Location=archive0910.html)
Data from the Univ. of Hawaii Sea Level Center



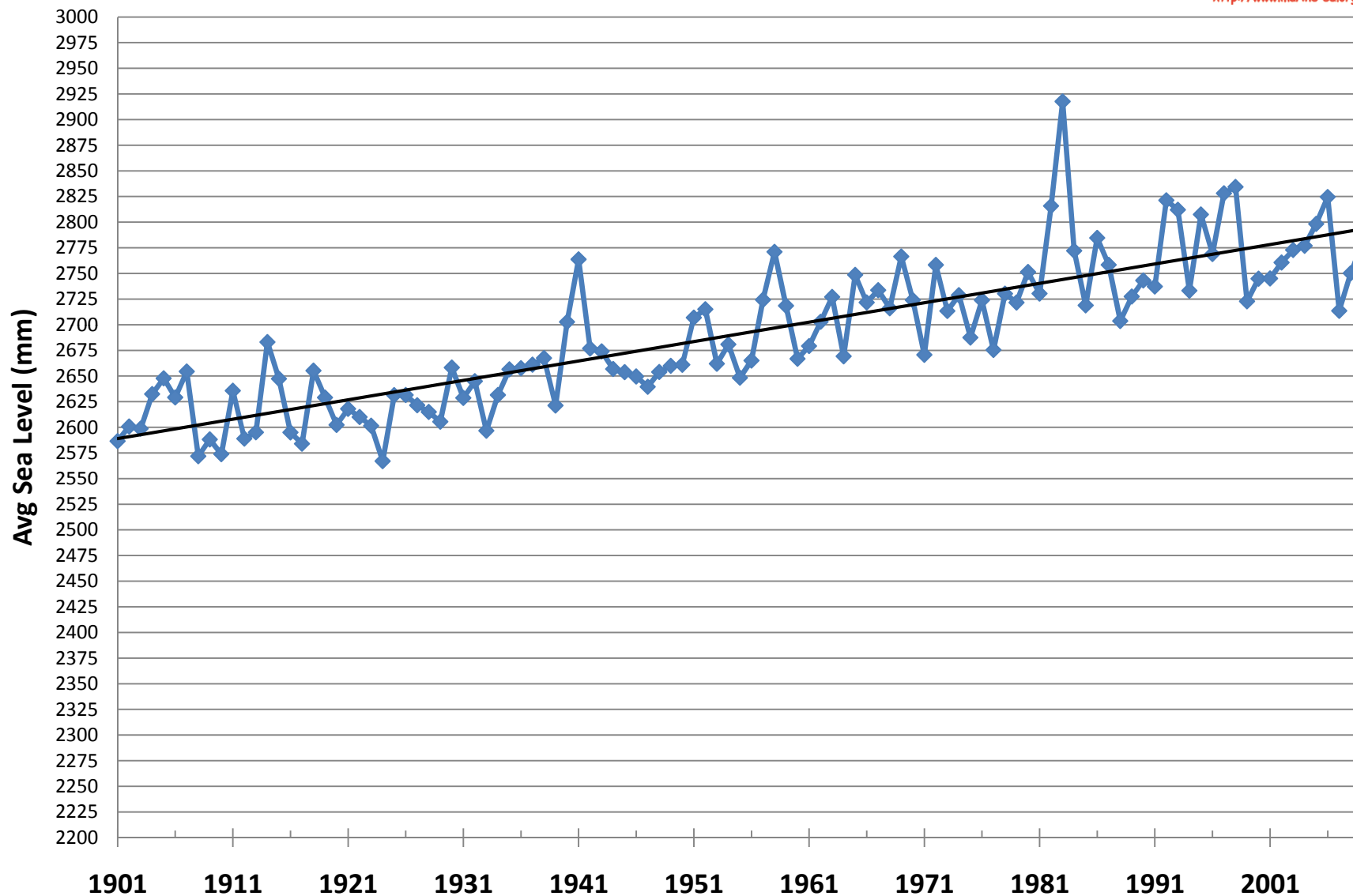
Average Annual Sea Level for Galveston, TX 1904 - 2009



Bridge Sea Level DATA (http://www2.vims.edu/bridge/DATA.cfm?Bridge_Location=archive0910.html)
Data from the Univ. of Hawaii Sea Level Center



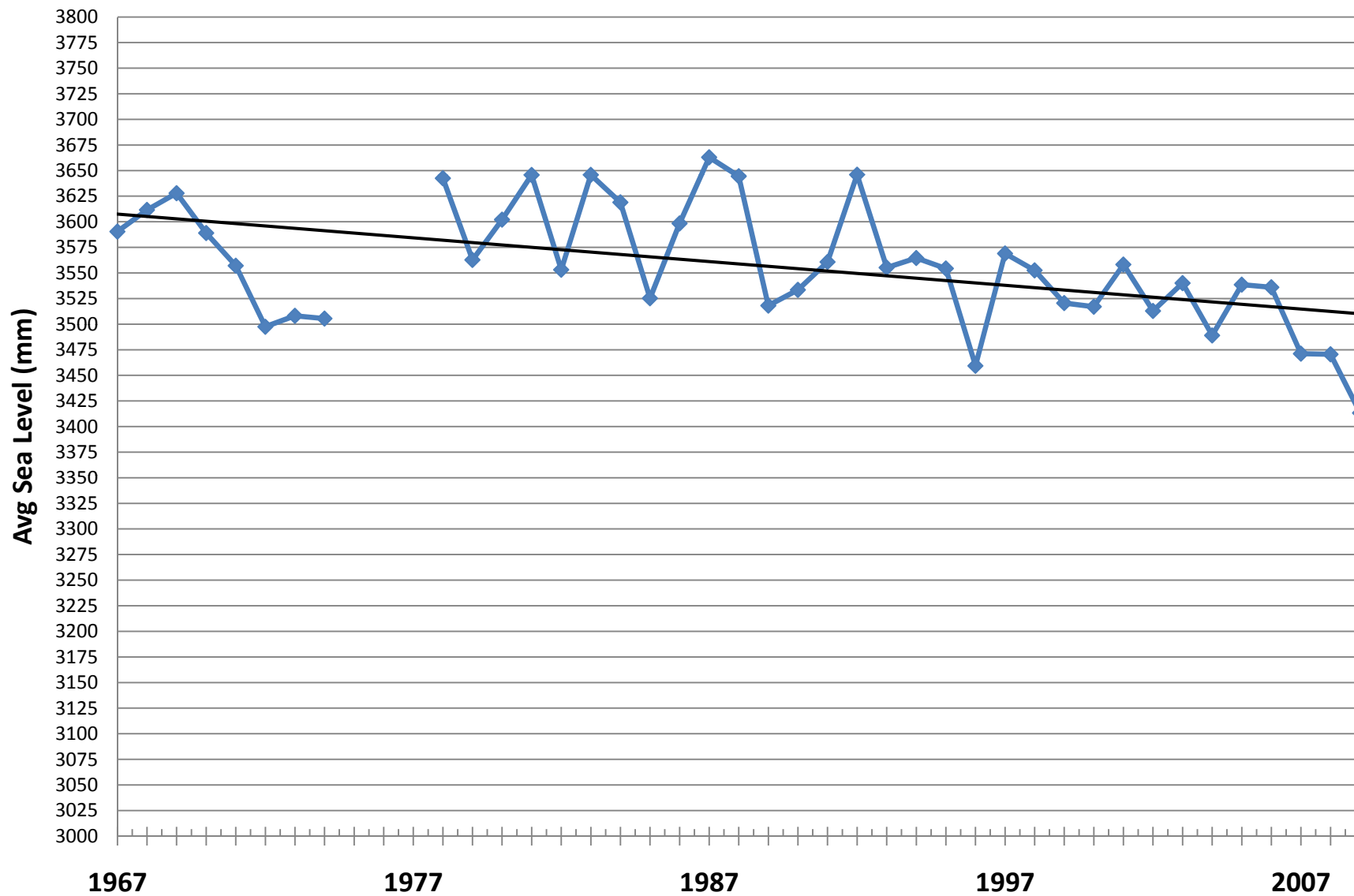
Average Annual Sea Level for San Francisco, CA 1901 - 2009



Bridge Sea Level DATA (http://www2.vims.edu/bridge/DATA.cfm?Bridge_Location=archive0910.html)
Data from the Univ. of Hawaii Sea Level Center



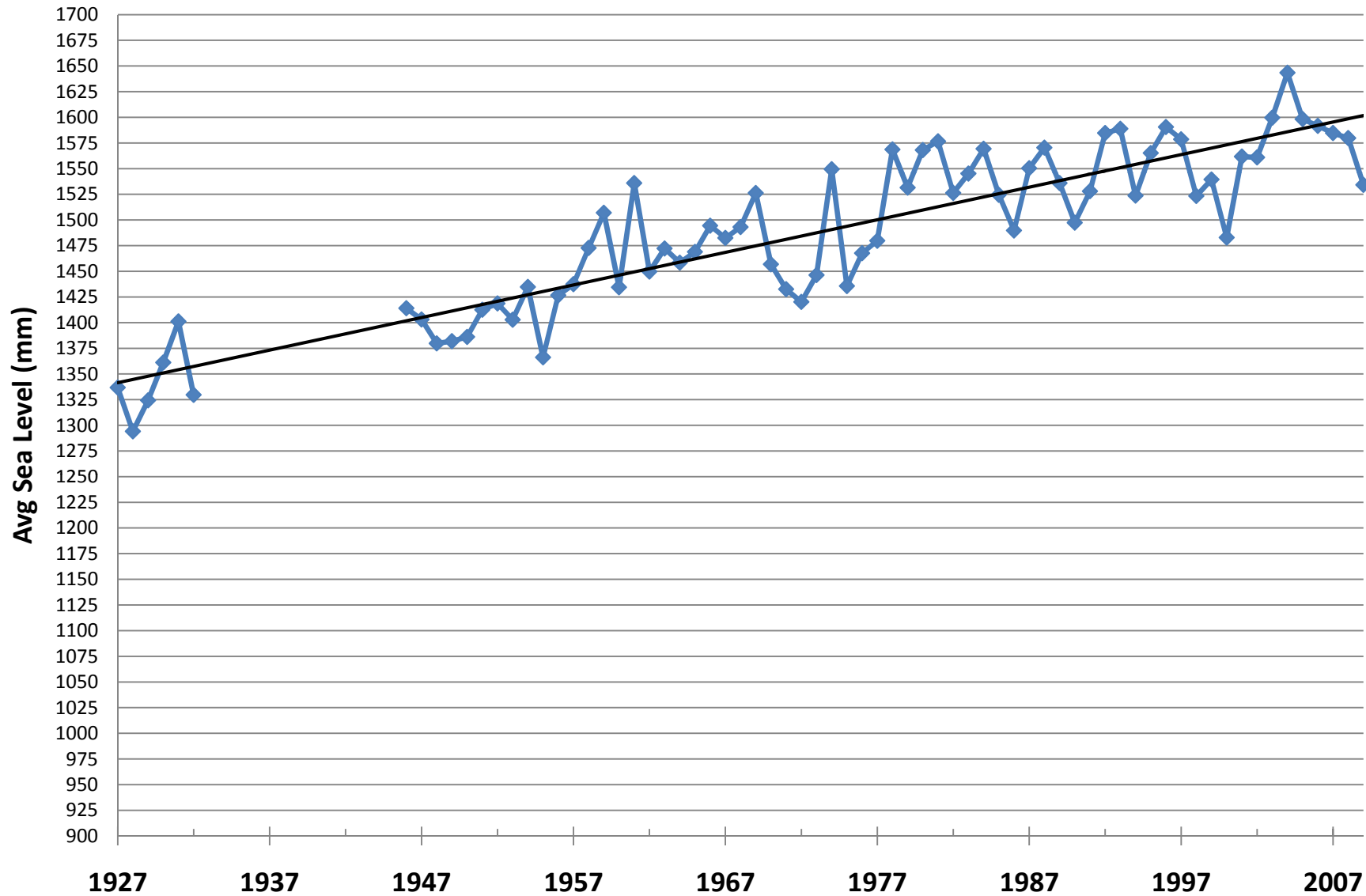
Average Annual Sea Level for Seward, AK 1967 - 2009



Bridge Sea Level DATA (http://www2.vims.edu/bridge/DATA.cfm?Bridge_Location=archive0910.html)
Data from the Univ. of Hawaii Sea Level Center



Average Annual Sea Level for Hilo, HI 1927 - 2009



Bridge Sea Level DATA (http://www2.vims.edu/bridge/DATA.cfm?Bridge_Location=archive0910.html)
Data from the Univ. of Hawaii Sea Level Center

